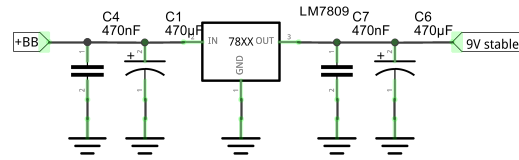
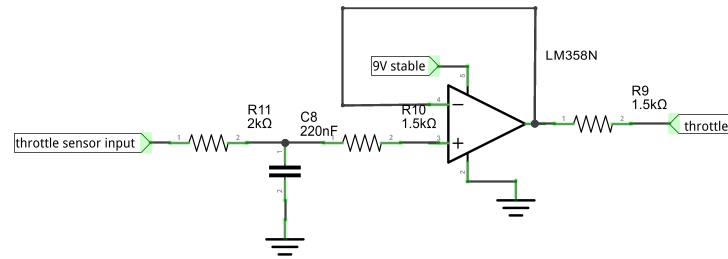


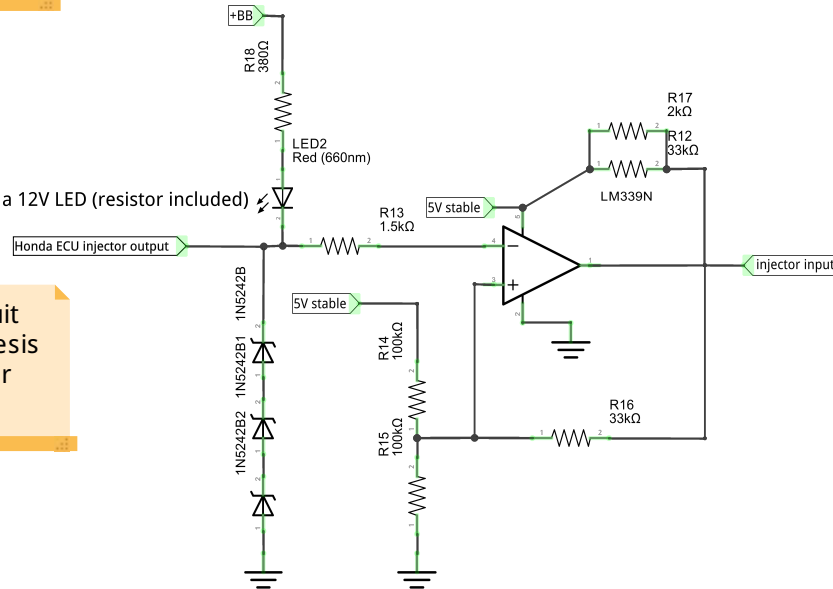
Power regulator
+BB is the battery
voltage after the main
relay (activated at key
ON)



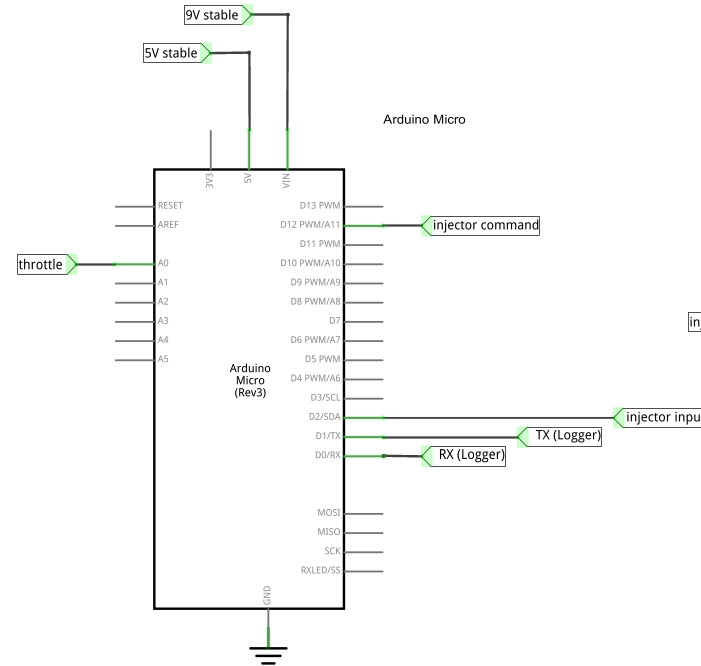
Throttle sensor
A buffer circuit
decouples the filtered
signal coming from the
throttle sensor



LED2 is a 12V LED (resistor included)



Injector input circuit
There is an hysteresis comparator to filter the noise



Injector output circuit
Injector is connected
between "+BB" and
"injector output"

